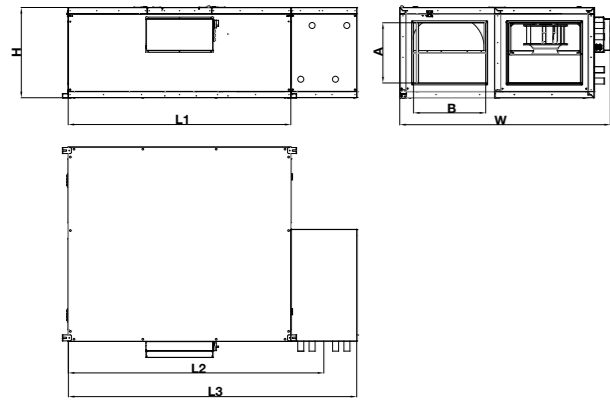


## DIMENSIONS



MODEL	DIMENSIONS [mm]						
	L1	L2	L3	W	H	AxB	
AZURE-W	25	1850	2150	2400	1550	650	500x400
	35	1850	2150	2400	1750	750	500x600
	40	1980	2280	2530	1850	800	550x650
	55	1980	2280	2530	1950	850	600x700

## SPECIFICATIONS

MODEL	AZURE WHEEL			
	25	35	40	55
MAXIMUM AIR FLOW (m³/h)	3100	4200	4700	5950
MAXIMUM POWER CONSUMPTION (W)	2080	3800	5000	5000
MAXIMUM CURRENT (A)	10	6,2	8,4	8,4
SUPPLY VOLTAGE	380 V / 50 Hz / 3 ~			
FILTERS (EXHAUST/SUPPLY AIR)	M5/F7			
WEIGHT (kg)	220	275	360	421
SOUND PRESSURE (dBA)	54	56	58	58

The values exclude the power consumption of accessories.  
The sound values are for radiated sound and are measured at nominal air flow 3m away from the duct integrated unit at 250Hz.  
Filter classes are in accordance with EN 779:2012.

## ACCESSORIES

### VOD (Ventilation on Demand)

**R**eturn duct mounted or room mounted CO<sub>2</sub> sensor continuously measures the CO<sub>2</sub> levels and generate a signal. SENSOPlus system compares the value with the set value and increase/decrease the fresh air flow to the building. One or several room sensors (up to 4) can be installed the different spaces and SENSOPlus system decides to choose from those signals.



### VAV (Constant Pressure)

**A**ZURE Wheel units are factory set to CAV (Constant Air Volume) operation. This allows the user to set a nominal air flow and a reduced air flow for the system. For installations where variable air flow is a need because of a VAV duct system the units are capable of running according to constant pressure. In VAV mode return air fan is operated according to the air flow in the supply fan.



DECEMBER 2017  
THE MANUFACTURER RESERVES THE RIGHT TO CHANGE THE SPECIFICATION WITHOUT PRIOR NOTICE.



AERA İKLİMLENDİRME TEKNOLOJİLERİ SAN. VE TİC. AŞ  
SALES OFFICE ■ Varyap Meridian, Grand Tower A Blok No:89 Ataşehir, İSTANBUL - TR  
TEL +90 216 504 76 86 FAX +90 216 504 76 90  
FACTORY ■ 3. Cadde No:13 Pancar OSB, Torbalı, İzmir - TR  
TEL +90 232 799 0 111 FAX +90 232 799 01 14  
R&D CENTER ■ 3. Cadde No:13 Pancar OSB, Torbalı, İzmir - TR

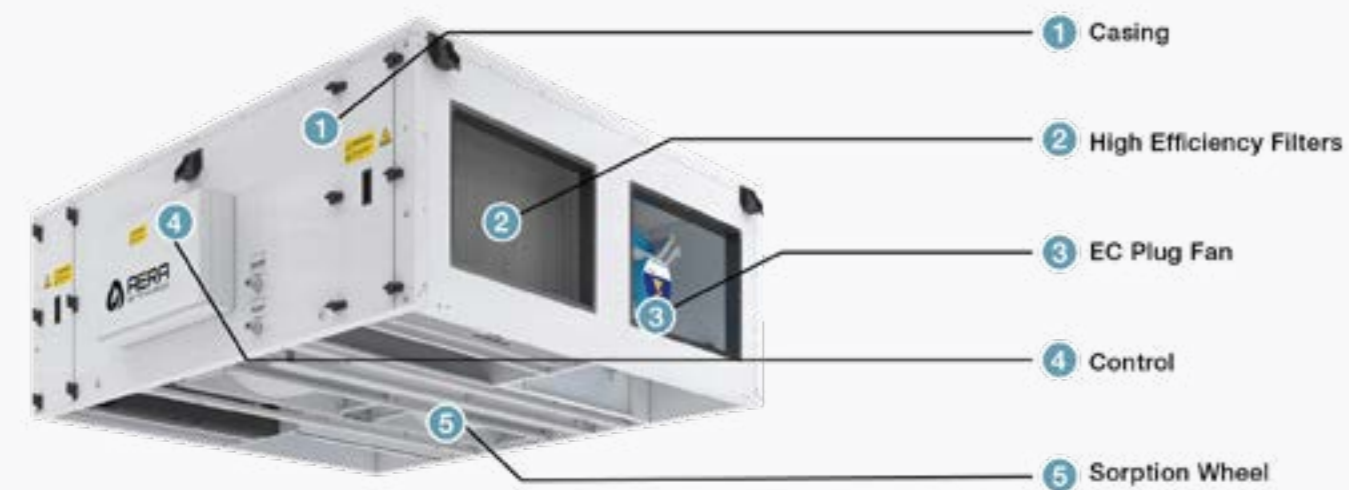
aera.com.tr



**CEILING TYPE ENERGY RECOVERY WITH ROTARY WHEEL**

AZURE Wheel units offer high heat and humidity transfer efficiencies in a compact casing with low heights for ceiling installations. With its unique control and enhanced efficiency in such compact casings, the units allow project developers to create decentralized ventilation systems.

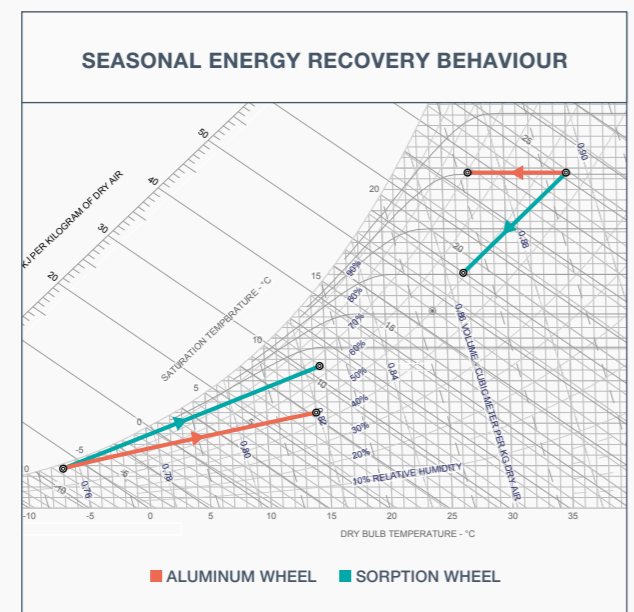
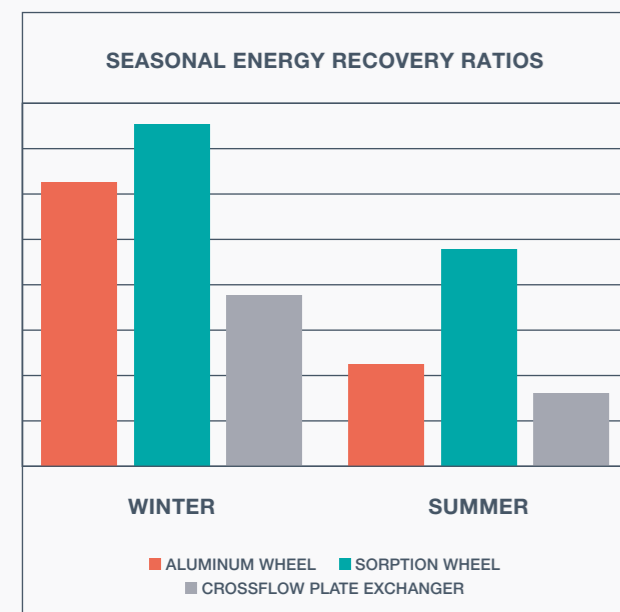
**COMPONENTS**



**SORPTION WHEEL**

**A**ZURE Wheel units present the state of art rotary wheels with high heat and humidity transfer rates. Twin rotary wheels are designed to decrease the height, enabling ceiling installations. Rotary wheel drive consists service free high torque step motor, stepless control drive and polyester chain belt system.

Rotary wheel is coated with 3Å Zeolite material for high humidity efficiency in both winter and summer season, that allows the transfer of water molecules only between air streams. In cooling season, AZURE wheel units promise 115% more energy transfer than a traditional Aluminum wheel and 195% more than a static Aluminum Plate.



**EC PLUG FAN**

**A**ZURE wheel units are equipped with EC Plug fans, which offer high aerodynamic efficiency with their engineered impeller design and electrical efficiency (min. IE4) with their unmatched electrical and electronic components. All the fans meet with the ECODSIGN directive and are approved for ERP2015.

With its unique control system AZURE Wheel units are delivered as standard for CAV applications and are also applicable for demand driven systems like VOD (Ventilation on Demand) or VAV (Constant Pressure). For VOD applications one or several room sensors or a return duct sensor can be used, the control decides the air flow accordingly.

**CASING**

**A**ZURE Wheel units casing is engineered to meet future demands and recent standards. The design is delivered eliminating the traditional concepts with high thermal and acoustic performance, robust structure, increased corrosion resistance and ease of installation and service. The casing performs T2, TB2, D1, F9 and L1 according to independently delivered test results according to EN 1886.

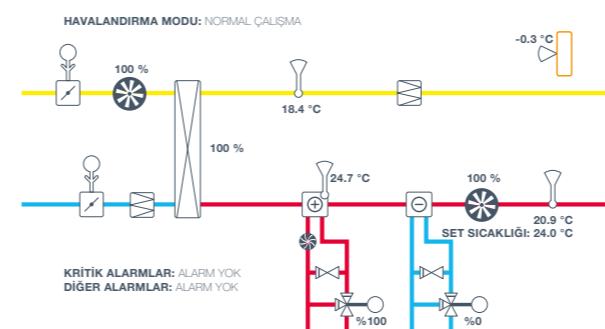
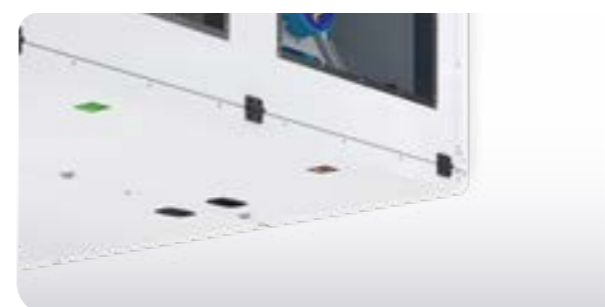
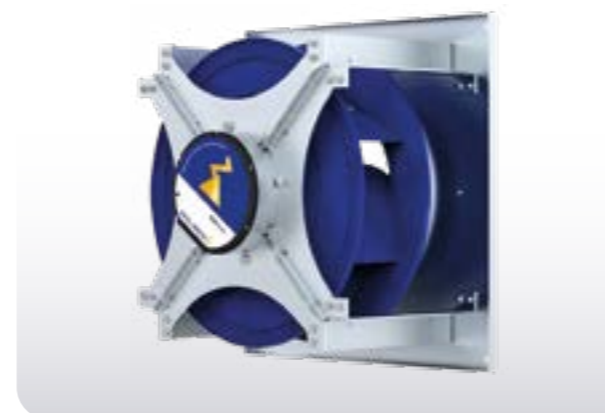
**CONTROL**

**T**he unique SENSOPlus system is delivered as standard with the unit to control all internal components and future accessories. The system controls supply air temperature according to user set value and control the capacity of all thermal components. The filters are monitored continuously with pressure transmitters dynamically, depending on the air volume and informs the user for filter clogging right on time.

The Plug and Play design of SENSOPlus system also allows several BMS applications via MODBUS and BACNET as standard and LONWORKS as an option. The control can be connected to intranet or internet to be controlled or report to a PC. With the CLOUDIGO integration it is also possible to control and monitor the unit from an internet connected PC from anywhere in the world

**HEATING/COOLING OPTION**

**T**o heat or cool the supply air to a user set temperature heating and/or cooling coils with water or refrigerant fluid flow can be used. The coils are delivered within an insulated casing and can be adapted directly to the standard casing of the unit. For cooling or DX coils an insulated drain pan is delivered within the casing as standard. Freezing control temperature sensor and required control is available with SENSOPlus system, capacity control valves and actuators are also delivered as standard with the optional coils.



**PERFORMANCE CURVES**

